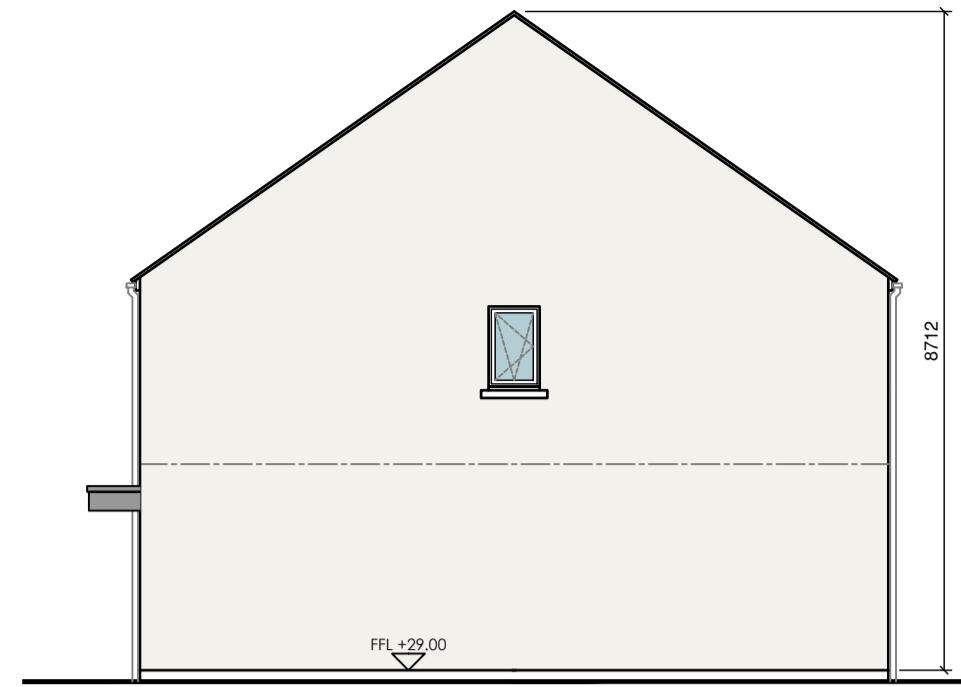




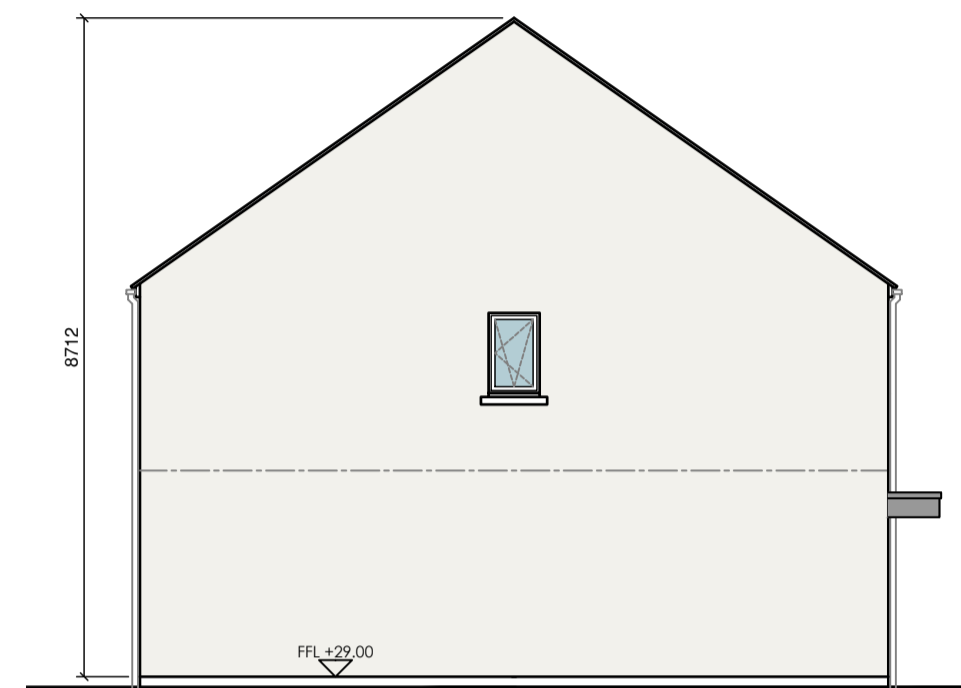
Front Elevation



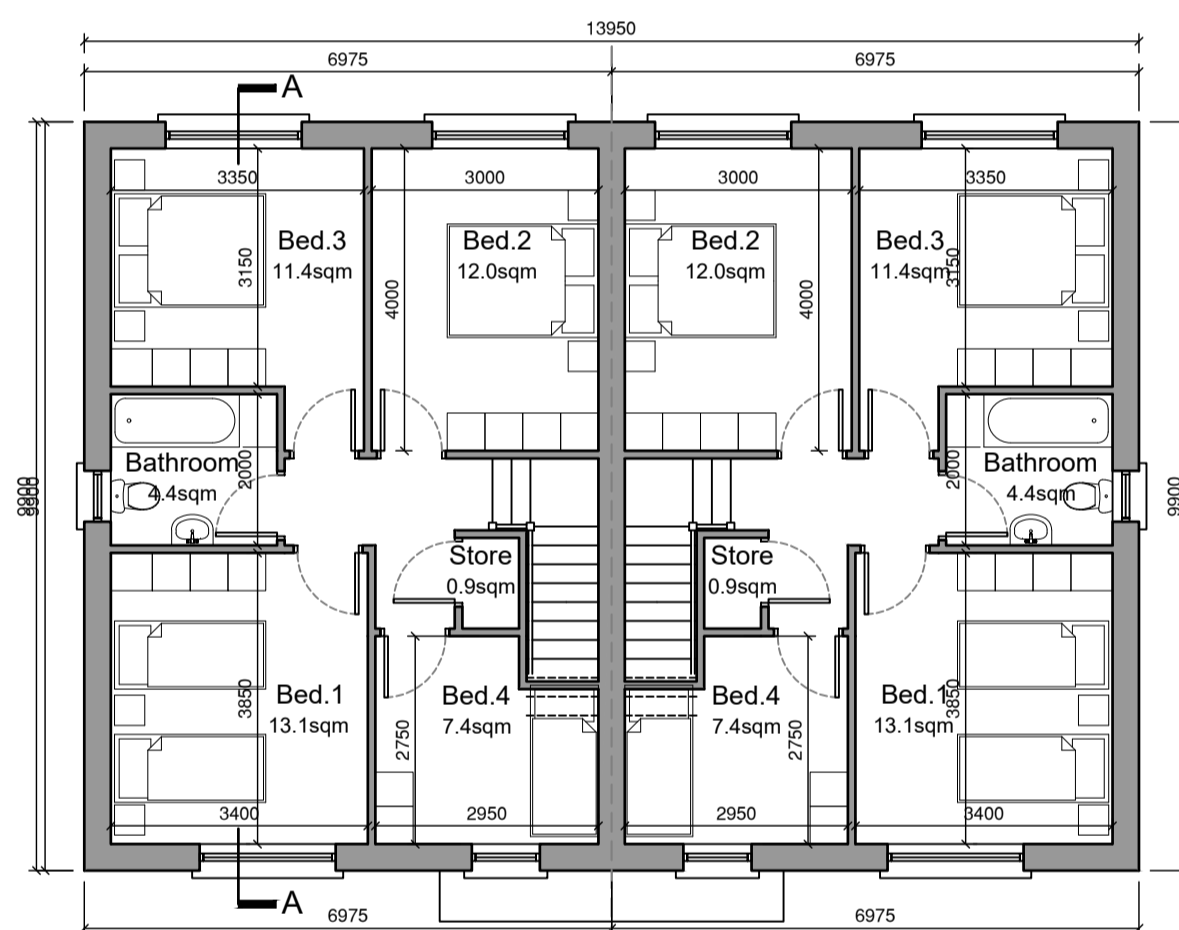
Side Elevation



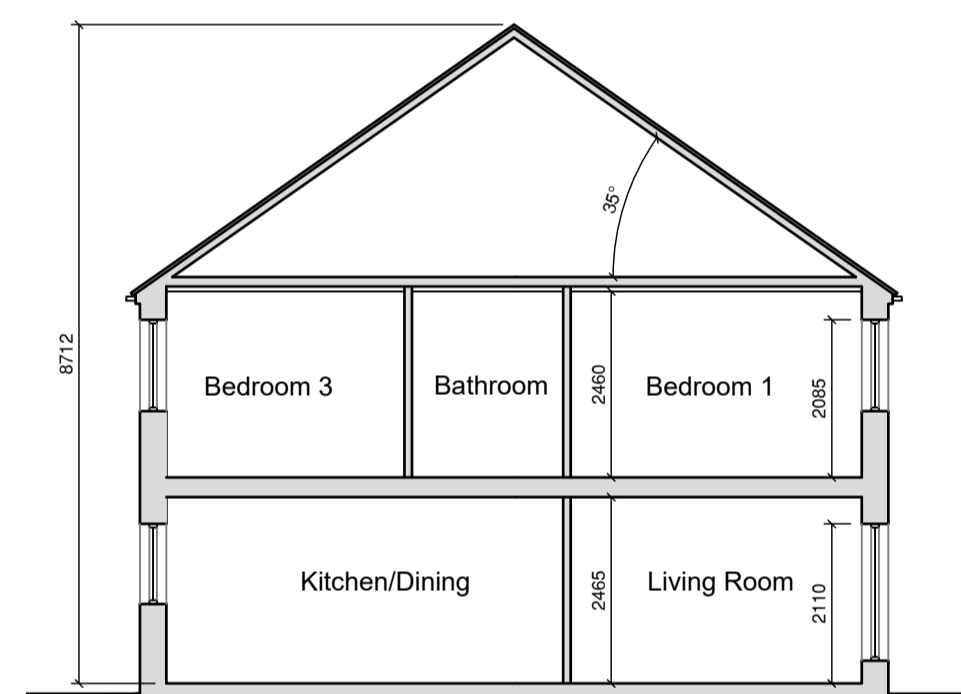
Rear Elevation



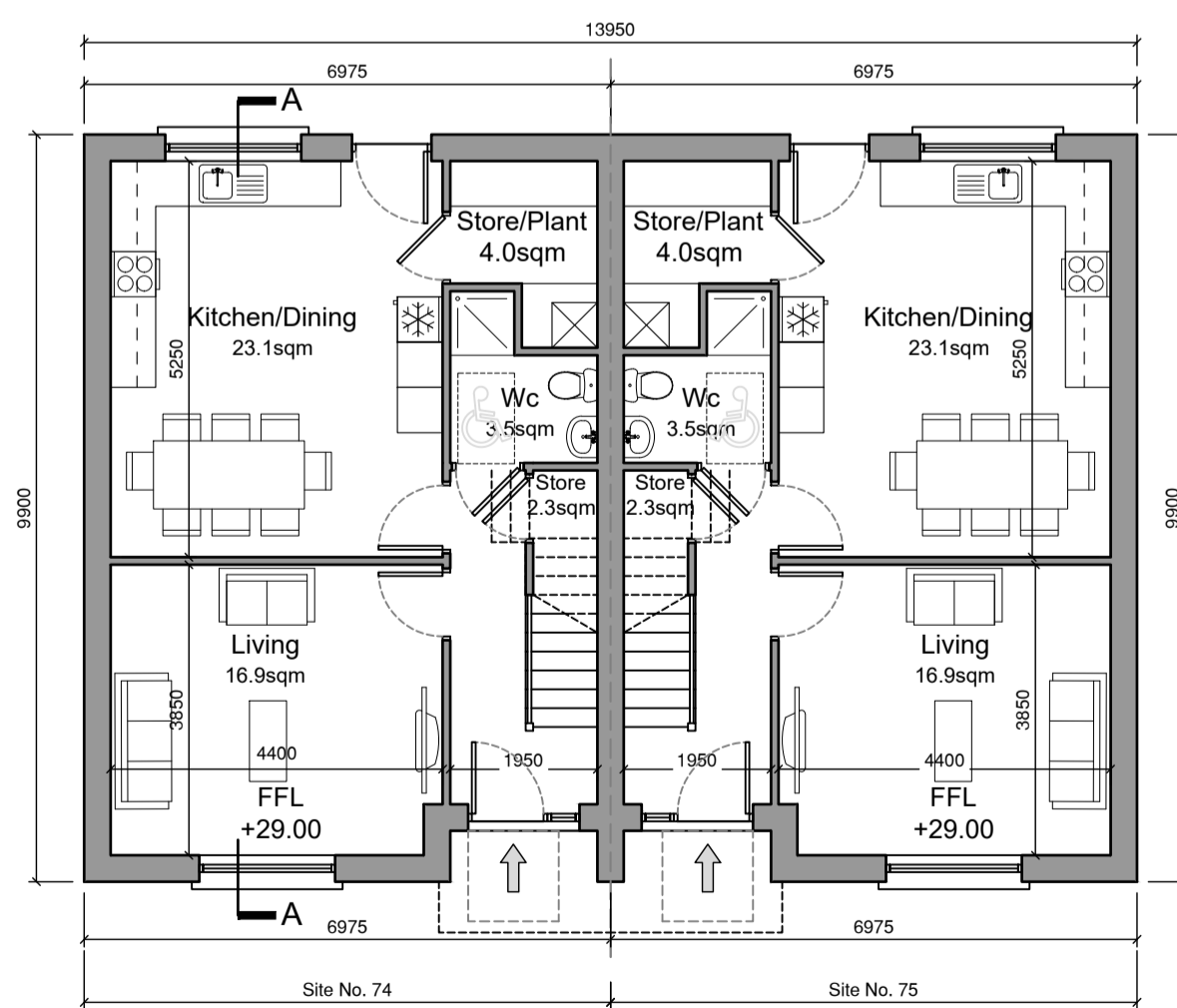
Side Elevation



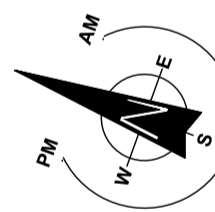
First Floor Plan
Area 49.1sqm



Section A-A



Ground Floor Plan
Area: 59.3sqm Total Floor Area 119.4sqm



House Type 22

Quality Housing for Sustainable Communities Standards

4 Bedroom / 7 Person House (2 Storey) Areas:

	Target Gross Floor Areas (m ²)	Min-Main Living Room (m ²)	Aggregate Living Area (m ²)	Aggregate Bedroom Area (m ²)	Storage (m ²)
Required	110 sqm	15 sqm	40 sqm	43 sqm	6 sqm
Provided	117.1 sqm	16.9 sqm	40sqm	43.9 sqm	7.2 sqm

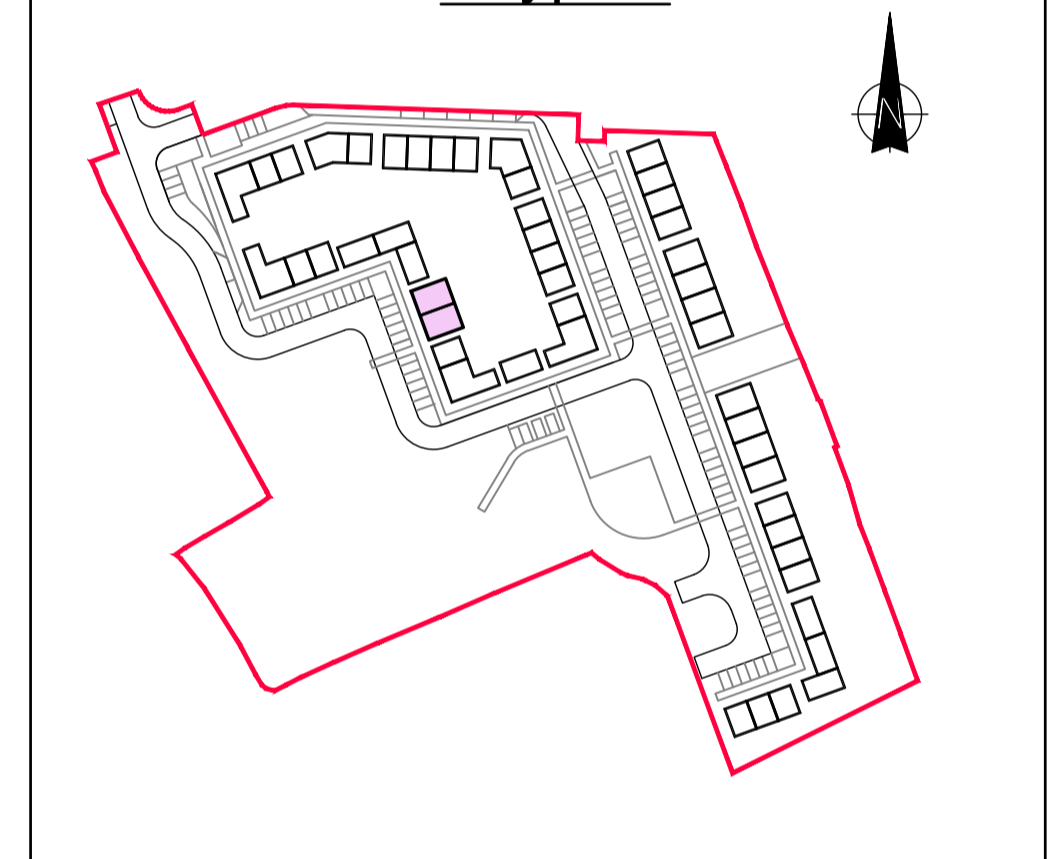
4 Bedroom / 7 Person (2 Storey) Widths:

	Single Bedroom (m)	Double Bedroom (m)	Living Rm [1 Bed] (m)	Living Rm [2 Bed] (m)	Living Rm [3 Bed] (m)
Required	2.1m	2.8m	3.3m	3.6m	3.8m
Provided	2.75 m	3 m	-	-	3.85 m

External Finishes Schedule

Roof: Blue/Black Fibre cement Slate
 Walls: White External Render - Smooth/dashed
 Windows & Doors: Grey AluClad
 Rain Water Goods: Black uPVC
 Canopy: Grey Aluminium Fascia.

Keyplan



NOTES

REVISION	DATE	DESCRIPTION	BY
-	-	-	-
-	-	-	-
-	-	-	-
-	-	-	-
-	-	-	-
-	-	-	-